

HYVA[®] CRANE HB 70



MODELS	LIFTING MOMENT	MAX VERTICAL REACH	SLEWING ANGLE	SLEWING TIME	MAX WORKING HEEL	WORKING PRESSURE	CRANE WEIGHT WITHOUT STABILIZERS	WEIGHT OF STABILIZERS	OIL TANK CAPACITY	OIL FLOW	DIMENSIONS
	T.m	m	°	s/180°	°	bar	kg	kg	l.	l/min	mm. B x h x S
HB 70 E1	7,17	8,50	387	15	4	265	820		35	20	2310x1980x600
HB 70 E2	-	10,20	387	15	4	265	900	100 std.	35	20	2310x1980x600
HB 70 E3	-	11,70	387	15	4	265	960	145 Extra	35	20	2310x1980x600
HB 70 E4	-	13,30	387	15	4	265	1020		35	20	2310x1980x600

ACCESSORIES

Outriggers with hydraulic extension
Supplementary elements activation
Winch
Manual extensions
Pivoting stabilizer legs
Extra extensible stabilizers
Top seat

ACCESSOIRES

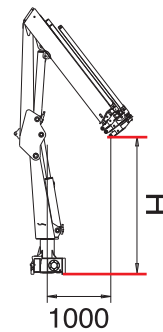
Béquilles avec ouverture hydraulique
Activation éléments supplémentaires
Trebil
Rallonges mécaniques
Béquilles pivotantes
Stabilisateurs extra extensibles
Poste de manoeuvre en haut

ZUBEHOERE

Hydraulisch ausfahrbare Abstützungen
Zusätzliche Steuerelemente
Seilwinde
Mechanische Ausleger
Drehbare Abstützbeine
Abstützungen mit Extraauszug
Hoch Führersitz

ACCESORIOS

Estabilizadores estendidos hidráulicamente
Ativação de elementos suplementares
Guincho de cabo
Extensões mecânicas
Sapatas estabilizadoras giratórias
Estabilizadores extra extensíveis
Posto de manobra no cima



HB 70 E1 = 2375
HB 70 E2 = 2375
HB 70 E3 = 2285
HB 70 E4 = 2170



Hyva Holding B.V.
Antonie van Leeuwenhoekweg 37
2408 AK Alphen aan den Rijn
The Netherlands
Telephone: +31 (0)172 - 42 35 55
Telefax: +31 (0)172 - 42 08 80
info@hyva.com
www.hyva.com
www.hyvacrane.com



DEALER

Data, descriptions and illustrations pertain only and uniquely to models sold at the time of printing of this brochure. After the date of printing, this information is purely indicative and not binding upon HYVA. Future modifications are solely at the discretion of HYVA and are always in compliance with applicable and pertinent safety standards. To obtain updated data, descriptions and illustrations, contact the manufacturer or your reseller. Cranes manufactured and/or marketed by HYVA - Les données, les descriptions et les illustrations se rapportent seulement et exclusivement aux modèles commercialisés à la date d'impression de ce dépliant. Après la date d'impression, ces informations sont simplement indicatives et n'engagent pas HYVA. D'éventuelles modifications sont à la discrétion d'HYVA et toujours dans l'observance des normes de sécurité pertinentes et applicables. Pour obtenir les données, les descriptions et les illustrations actualisées, s'adresser au fabricant ou au revendeur. Grues produites et/ou vendues par HYVA - Daten, Beschreibungen und Abbildungen beziehen sich ausschließlich auf die zum Zeitpunkt des Drucks dieser Broschüre vertriebenen Modelle. Nach diesem Datum verstehen sich diese Informationen als rein richtungweisend und sind in keinem Fall für HYVA verbindlich. HYVA behält sich vor, nach eigenem Ermessen und in jedem Fall unter Berücksichtigung der zugehörigen und geltenden Sicherheitsvorschriften Änderungen vorzunehmen. Bitte wenden Sie sich für aktuelle Daten, Beschreibungen und Abbildungen an den Hersteller oder Händler. Die Krane werden von HYVA hergestellt und/oder vermarktet. - Os dados, descrições e ilustrações referem-se única e exclusivamente aos modelos comercializados à data da impressão deste folheto. Após a data da impressão, estas informações são meramente indicativas pelas quais a HYVA não se responsabiliza. Eventuais alterações ficam ao critério da HYVA e estão sempre em conformidade com as normas de segurança pertinentes e aplicáveis. Para obter dados, descrições e ilustrações atualizadas, contacte o fabricante ou revendedor. Guindaste produzidos e/ou comercializados pela HYVA.

TRUCK-MOUNTED CRANES HB 70



HYVA[®] CRANE HB 70



- Load limiting device (CE)
- Hexagonal section extensions
- Independent extension cylinders
- Flanged valves
- Assembly kit
- Designed in accordance with: EN12999-DIN15018
- Fatigue test classification: B3
- Oil tank
- Dual controls
- Fixed stabilizer cylinders
- Mechanical rotation limitation (CE)



- Limiteur de moment (CE)
- Extensions à section hexagonale
- Vérins hydrauliques à sortie indépendante
- Vannes bridées
- Kit de brides de fixation
- Projet en accords aux normes: EN12999-DIN15018
- Essai de fatigue avec classification: B3
- Réservoir huile
- Commandes bilatérales
- Vérins stabilisateurs fixes
- Limitation mécanique de la rotation (CE)



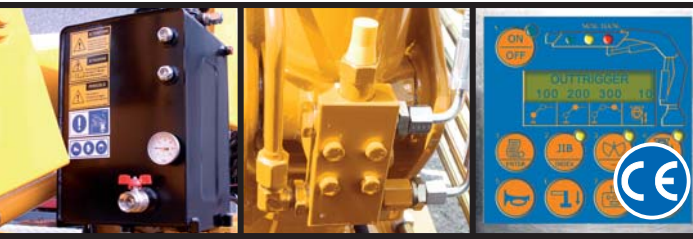
- Momentbegrenzer (CE)
- Sechskantige Ausschübe
- Unabhängige Auszugzylinder
- Ventile mit Flansch
- Befestigungsteile
- Berechnungsnorm nach: EN12999-DIN15018
- Ermüdungstest in Klasse: B3
- Ölbehälter
- Beideseitige Kransteuerung
- Feste Abstützungen
- Mechanischer Schwenkbegrenzer (CE)



- Válvula limitadora de momento de carga (CE)
- Extensões sextavadas
- Cilindros de extensão independentes
- Válvulas flangeadas
- Kit de montagem
- Norma do projeto: EN12999-DIN15018
- Tipo de ensaio de fadiga: B3
- Reservatório de óleo
- Comandos bilaterais
- Estabilizadores fixos
- Sistema mecânico de giro (CE)

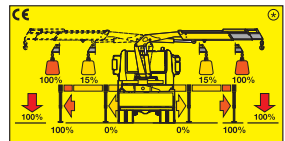
Model	kg	m	kg	m	kg	m	kg	m
HB70 E1	7170*	2925**	1865	1300	945	705		
	1,00	2,45	3,84	5,40	7,02	8,66		
HB70 E2	6870*	2805**	1760	1230	945	705	530	
	1,00	2,45	3,90	5,46	7,02	8,66	10,30	
HB70 E3	6620*	2700**	1675	1155	870	705	530	415
	1,00	2,40	3,95	5,50	7,10	8,66	10,30	11,90
HB70 E4	6470*	2620**	1585	1075	800	635	530	415
	1,00	2,45	4,08	5,60	7,20	8,76	10,30	11,90

*1) Theoretical lifting capacity
**2) Fixed hook capacity

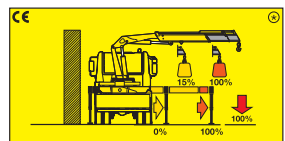


Stability control systems (CE)

HXL System



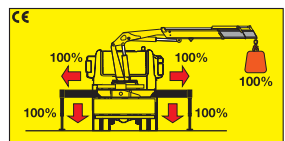
The TCU checks the positions of the stabilizers beams, monitoring for two possible positions: beam fully open, beam not fully open. Depending on the position of the beams and the stabilizers, the crane's lifting capacity changes according to the setting made by the installer. This allows the operator to use the crane even with a beam partially or fully retracted without having stability problems.



Optional HRCS

The Rotation Control Sensor constantly checks the slewing position of the crane and limits the lifting capacity depending on the beams' and the stabilizers' positions.

HML System

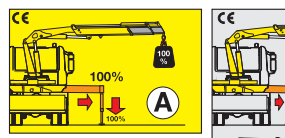


The HML System integrated in the load limiting device checks the stabilizers' positions. Only when all beams are fully open and all stabilizers are on the ground the crane can operate and lift loads.

Control display



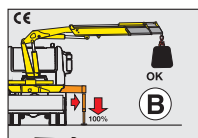
HL System



The HL system checks the stabilizers' positions and the truck's inclination.

According to the beams' positions, the system allows two operating modes:

Mode A - all beams fully open and all stabilizers feet on the ground.
Mode B - stabilizers on the ground only.



In **mode A**: the load limiting device stops the crane when the crane reaches 100% of the nominal capacity.
In **mode B**: a dedicated sensor monitors the truck's inclination. The load limiting device stops the crane before it reaches an inclination angle dangerous for stability, or when the crane reaches its nominal capacity.



Control display



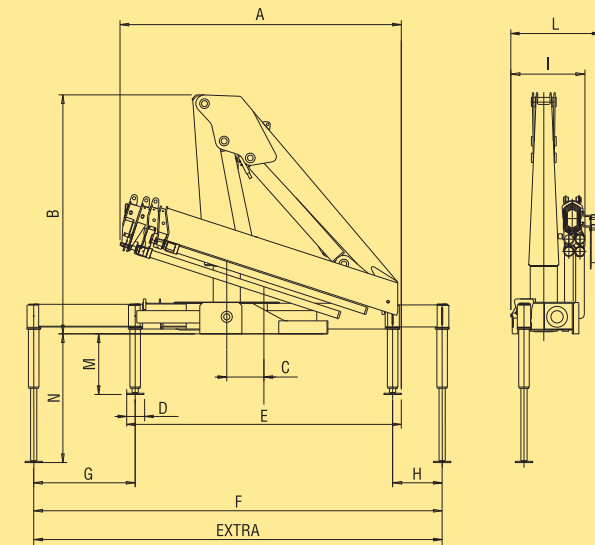
HB70 X



■ Compact dimensions and reduced weight

■ Proportional speed control of any single movement

■ Stabilizer control by radio



HB 70	E1	E2	E3	E4
A	2075	2150	2270	2300
B	1940	1940	1940	1940
C	300	300	300	300
D	150	150	150	150
E	2300	2300	2300	2300
F	3370	3370	3370	3370
G	820	820	820	820
H	400	400	400	400
I	600	600	600	600
L	730 OPT.	730 OPT.	730 OPT.	730 OPT.
M	490	490	490	490
N	1040	1040	1040	1040
EXTRA	4600	4600	4600	4600