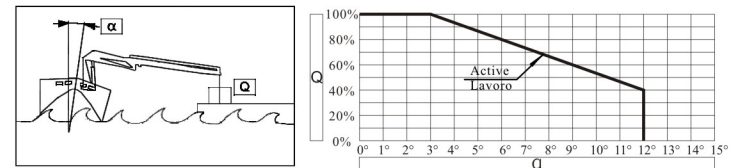
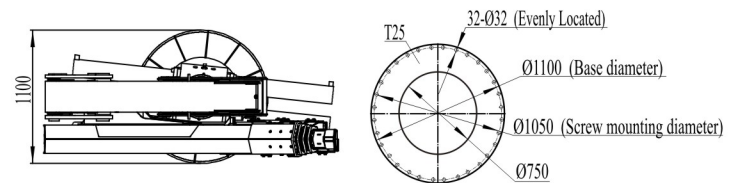


Mounting Plate



230M.2	m	2.5	4.26	6.08	7.82		
	Kg	8580	5015	3398	2590		
230M.3	m	2.5	4.26	6.08	7.95	9.81	
	Kg	8440	4885	3278	2429	1954	
230M.4	m	2.5	4.29	6.11	7.98	9.9	11.8
	Kg	8310	4732	3152	2310	1837	1564

Technical Data

	Lifting capacity (KN.m)	Power (KW)	Rotation	Working pressure(MPa)	Pump capacity(cc/r)	Oil tank capacity(L)	Crane weight(kg)
230M.2	220	22	385°	28	40~60	120	2876±50
230M.3							3076±50
230M.4							3300±50

Manufacturer reserves the right to alter or amend the design, model and specification without prior notice.

This load chart is based on: Mounted on the testing base