

MULTI CRANES A N D PLATFORMS

MC 313

CLICK HERE TO REQUEST A QUOTE

UNIVERSAL CRANE WITH AUGER MAN BASKET & WINCH

FEATURES OF MC 313 CRANE

- Max working Radius - 8.5m Lifting 972kg
- Max working height - 12.5m
- Max lifting capacity - 3500kg
- Boom Articulation - 15° to 80°
- Slew angle - 360° continuous
- Rated oil flow - 37 Lt/min
- Rated pressure - 195 bar
- Oil tank capacity - 60 Lt
- Control station - Top seat controls
- Auger diameter - 300mm/400mm/450mm
- Winch Rope diameter - 8m wide and 60m length
- Winch depth - up to 40 metres
- Boom system - Straight boom Hexagonal winch type
- Extension boom - Hexagonal with hydraulic hose tray system



OPTIONAL EXTRA'S

- Top Seat controls, Dual standing controls or Radio remote control.
- Auger widths & depths.
- Engine accelerator throttle controls.
- Aerial basket, fibre glass, Polythylene or Aluminium.
- Jack high legs to utilise as Roll back system.

RATED LOAD TABLE-SC313ML

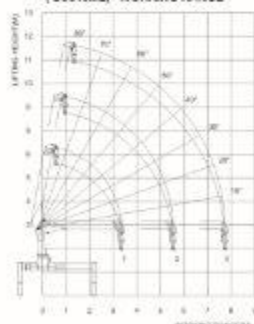
Hoisting Force kN(t)	Boom length		
	3.00	3.50	4.10
1.0	2000	1500	1000
2.0	1000	750	500
3.0	667	500	333
4.0	500	375	250
5.0	400	300	200
6.0	333	250	167
7.0	286	214	143
8.0	250	188	125
9.0	222	167	111
10.0	200	150	100

Note:

- 1 Fully extend all outriggers on solid level surface leveling vehicle.
- 2 Rated loads shown in this chart are based on the crane strength rather than stability.
- 3 Rated loads shown must be reduced in accordance with vehicle weight and loaded condition of truck, crane mounting position, wind, ground condition and operating speed.
- 4 The weight of rope, slings and any accessories attached to the hook or loadline shall be deducted from the above rated loads.
- 5 In accordance with our policy of continual improvements, all specifications are subject to change without notice or obligation.



(SC313ML) WORKING RANGE



MULTICRANES & AERIAL PLATFORMS

65 Serenade Road, Elandsfontein

011 822 0546