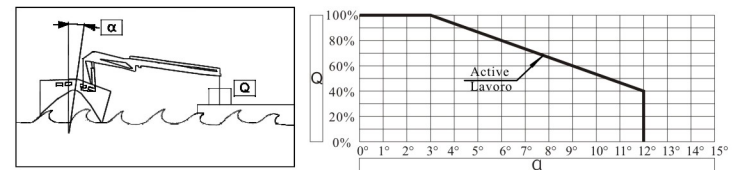
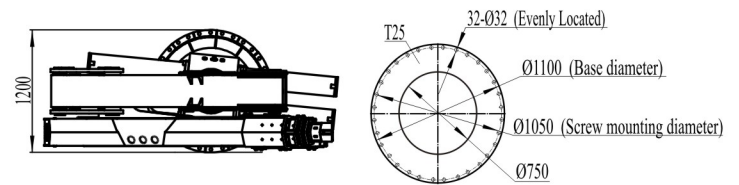


300M.2	m	2.5	4.5	6.38	8.1		
	Kg	11588	6450	4467	3484		
300M.3	m	2.5	4.5	6.28	8.1	10.16	
	Kg	11398	6270	4375	3314	2623	
300M.4	m	2.5	4.5	6.38	8.25	10.16	12.08
	Kg	11218	6100	4149	3097	2473	2152

Mounting Plate



Technical Data

	Lifting capacity (KN.m)	Power (KW)	Rotation	Working pressure(MPa)	Pump capacity(cc/r)	Oil tank capacity(L)	Crane weight(kg)
300M.2	290	30	385°	28	40-60	160	3770±50
300M.3							3920±50
300M.4							4120±50
							4120±50

Manufacturer reserves the right to alter or amend the design, model and specification without prior notice.

This load chart is based on: Mounted on the testing base